



# POWER LUNCH

AUGUST 2008

*Bringing Worship to the Workplace*

## Seed Season Partnership

By Richard Brown

On behalf of the Power Lunch ministry, we would like to thank all of you who have supported this ministry over the years with your time and your offerings. It is you that has contributed to the tremendous growth of the Power Lunch Ministry over the past six years. Just think, we all plant seed, then we water it through our giving, cultivate it through our prayers and watch God give the increase, some hundredfold, some sixtyfold, some thirtyfold. Power Lunch has been a blessing to me and so many others over the years. It is a place to come to in the middle of the work day, in the middle of the work week to hear God's word go forth with power and authority. It is a grand opportunity to fellowship with other believers who love the Lord like I do. To be taught how to live a more Godly life, both at home and at work. And let us not forget the great bag lunches that are served every week, the great praise and worship team that takes us to another level with our attitude. What a blessing this has been to have this available to us. It has been a miracle to see the ministry grow from only filling half the smallest movie theater in Union Station to overflowing the largest theater and birthing five other Power Lunch ministries across the country, if that is not God, I don't know what is! This is a working ministry that helps people grow, we set aside time to help educate first time home buyers on how to purchase a home. For women's month, we support women who are entering the business and job community for the first time with clothing donations so that they can be dressed appropriately. ...And many other outreach activities and services.

We have entered into what we call the "Seed Season of Giving". This is when we ask people to commit to partnering with the Power Lunch Ministry for a year. The word centurion from the Bible refers to a Roman officer commanding from fifty to one hundred soldiers. One of the centurions mentioned in the Gospels asked our Savior to cure his servant and for his faith the Savior highly commended him (Matthew 8:5; Luke 7:2). Season

*Continued on Page 2*

## Reflections of a Seed Partner

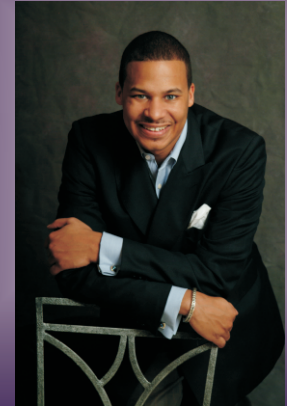
By Crystal Williams

I have been coming to PowerLunch for awhile, however, I did not become a Seed Partner until recently. I just was not committed to giving up the money each week, I just forgot the checkbook; I just said oh!, I will give next week. Well, now I am a partner and this whole experience has totally empowered me to study and want to learn more about the word of God.

We all profess to love the Lord and without him, we would fail. Well, I realize that the dedication and commitment that Rev. Watley has given to this ministry is truly just his relationship with the Lord and he has come to show us how to build a better relationship with God. The commitment and dedication of coming to share the word of God with us through rain, snow and

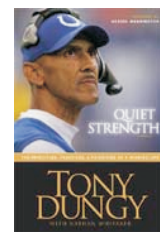
*Continued on Page 2*

Founder  
& DC Facilitator



Rev. Matthew L. Watley

Get the latest book at the  
welcome desk!  
"Quiet Strength"  
By Tony Dungy



### ISSUE HIGHLIGHTS

**Seed Season Partnership**  
By Richard Brown

**Reflections of a Seed Partner**  
By Crystal Williams

*Continued from Page 1 Seed Season Partnership*

means a natural division of time, and as we enter this fall season, let us be mindful of the needs of others. As the animals prepare by gathering food in this season for the winter, let us prepare for the next season of our lives by giving of ourselves, for it is not what you store up on earth that will help you get to where you want to go in the next season of your life, but it is as you give to others that will prepare you for the next season of your life. You see, we walk by faith not by sight, leaning on the Lord. As we give to the Lord, He gives back to us, pressed down shaken together, running over. Make your giving, from the heart, the Bible says for God so loved the world that gave his only Son, so that whosoever believes on him should have everlasting life (John 3:16). God has already made the biggest sacrifice anyone can give, but as we give to the things that belong to Him, He sees our hearts and the love we have for Him. Webster's definition of partnership is a contract between two or more persons in which each one agrees to furnish a part of the capital and labor for a business enterprise, and by which each one shares in some fixed proportion the profits and losses of the business arrangement. Now we first thank God for the partnership we have with him everyday. We as Christians have committed to be servants for Him. Our partnership with Power Lunch Ministry is just another way of working out our ability to serve God. For we know we are all in this together.

The vision for this Power Lunch Ministry, God placed on the heart of Reverend Matthew L. Watley's heart over six years ago, and with much hard work, being persistent and consistent; and moving under the powerful anointing of God; God has given the increase, not only in his life and the life of the ministry, but in the lives of the volunteers, members and friends. Words cannot express all that Power Lunch has done for me, above all I have a closer relationship with my Father God through serving. To be able to give of my time and money does not compare to the times when I walk into Power Lunch feeling down, having a bad day and after the service walk out with joy and not a care in the world. Also, all the great people I have met and friendships I have developed, people who will pray for you and love on you in your time of struggle. And let's never forget the great lunches, both spiritual and physical food.

Those of us who have made a commitment to support the ministry with the giving of our offerings to the tune of \$1000.00 a year, which is about \$20.00 a week, have seen the blessings of God poured out all over us. Some of us give more because God has spoken to

*Continued from Page 1 Reflections of a Seed Partner*

sleet is to be commended. Reverend Watley, thank you for the teaching and the walk of responsibility you show and have placed in my life.

You see, we are a chosen generation of people that must be dedicated and committed to the Lord and not to man. You bring what the Lord has blessed you with in service to the Lord, then we are commissioned to go out and minister to others about how PowerLunch offers a place of worship on Wednesdays, in a MOVIE theatre. I realize that I too have a responsibility not only to become a partner but also to win souls for Christ, to increase this ministry. Therefore, each time I think about picking up a free lunch I think about your vision and know that God will increase those who give willingly! Because of your vision, your sincerity, your dedication and commitment to make sure that we receive the word of God, I have become a partner.

Thank you PowerLunch, I will see you "Same Bat Time, Same Bat Station" on Wednesday's, in the MOVIE theatre! God is GOOD!

**Power Lunch News** **August Monthly Focus****Seed Partnership****Announcements**

**It's Seeding Season!  
Become a Partner Today**  
The fruit that Power Lunch yields demonstrates that this ministry is good soil. Don't miss your chance to be a part of the harvest.

Sign-up forms are available at the product table and online at [www.powerlunch.org](http://www.powerlunch.org).

**Become a PL Volunteer!**

If you are interested in becoming a PL Volunteer please sign-up at the welcome desk. Your gifts and talents are needed.

**Write for the Newsletter!**

Are you gifted in the area of writing? Why not submit to The Power Lunch Newsletter. We are accepting articles & Testimonies to include in upcoming editions. The articles & Testimonies must be Bible based and must focus on applying Biblical principles in the workplace. Submit all articles to: [newsletter@powerlunchonline.com](mailto:newsletter@powerlunchonline.com)  
Submit today!

*Stay tuned for the September edition of The Power Lunch Newsletter!*